



Wildern Lane
East Hunsbury, Northampton

oriordanbond
SALES & LETTINGS



Wildern Lane

East Hunsbury
NN4 0SN

PRICE £219,995

Offered for sale with no onward chain is this well presented two bedroom terraced property, located within a quiet cul-de-sac, on the outskirts of the popular East Hunsbury estate.

The property is in good decorative order throughout and offers accommodation comprising entrance hall, sitting room, re-fitted kitchen/dining room with built in oven and hob, first floor landing, master bedroom, second bedroom with built-in wardrobes and a three-piece bathroom. Outside is an open plan front garden with a private enclosed garden to the rear with lawn and patio areas. Further benefits include uPVC double glazing, electric storage heating and a single garage in a nearby block with off road parking. (B/564/M)

Additional information

- Council Tax Band: B
- Energy Efficiency Rating:

Viewing

Viewing strictly by appointment – details below

Disclaimer

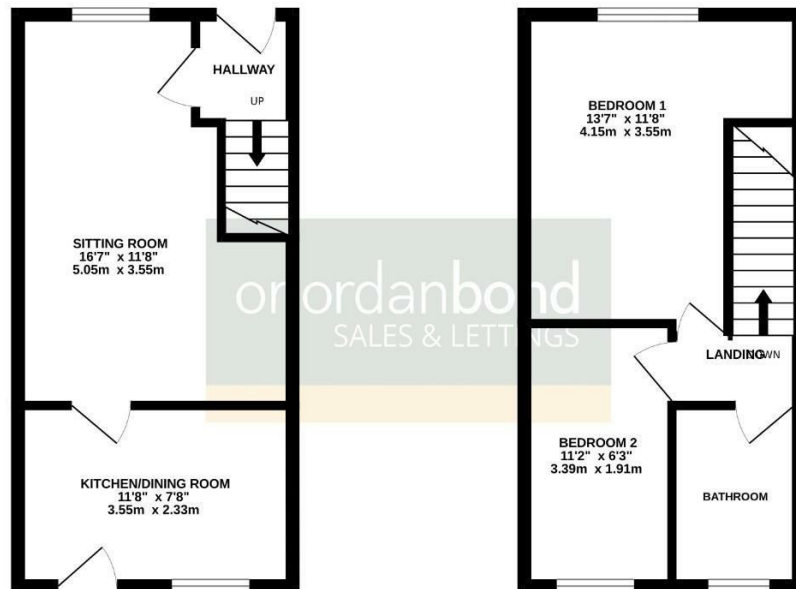
O'Riordan Bond Estate Agents Limited has not tested apparatus, equipment, fittings or services and so cannot verify they are in working order. The buyer is advised to obtain verification from their solicitor or surveyor.

O'Riordan Bond Hunsbury Sales
01604 706007

hunsbury@oriordanbond.co.uk

GROUND FLOOR

1ST FLOOR



TOTAL FLOOR AREA: 564 sq.ft. (52.4 sq.m.) approx.

While every attempt has been made to ensure the accuracy of the floorplan contained here, measurements of doors, windows, rooms and any other items are approximate and no responsibility is taken for any error, omission or mis-statement. This plan is for illustrative purposes only and should be used as such by any prospective purchaser. The services, systems and appliances shown have not been tested and no guarantee as to their operability or efficiency can be given.
Made with: Neoglyph ©2020

